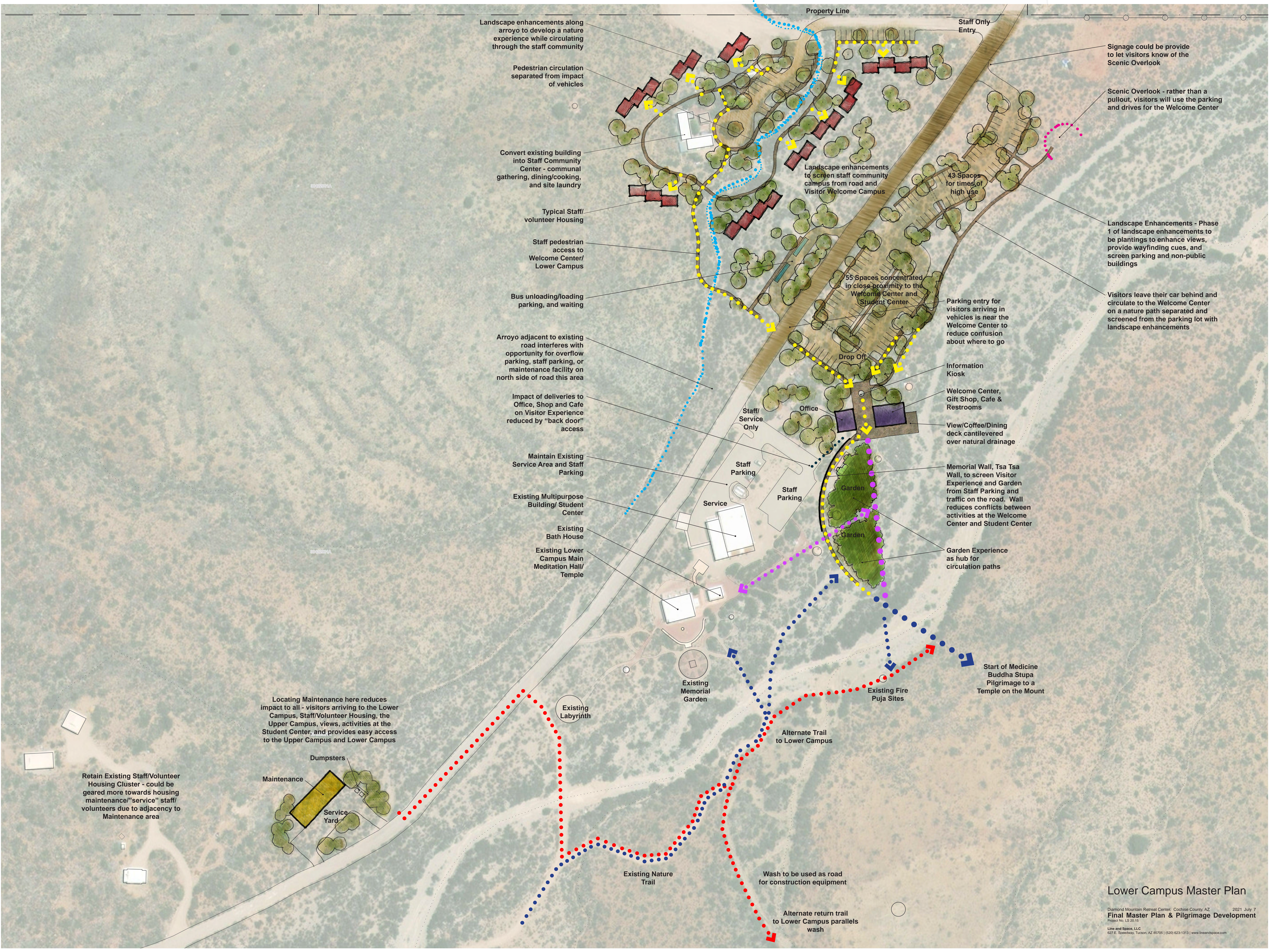




Diamond Mountain Retreat Center  
*Cochise County, AZ*

**Final Master Plan &  
Pilgrimage Development**





Landscape enhancements along arroyo to develop a nature experience while circulating through the staff community

Pedestrian circulation separated from impact of vehicles

Convert existing building into Staff Community Center - communal gathering, dining/cooking, and site laundry

Typical Staff/volunteer Housing

Staff pedestrian access to Welcome Center/ Lower Campus

Bus unloading/loading parking, and waiting

Arroyo adjacent to existing road interferes with opportunity for overflow parking, staff parking, or maintenance facility on north side of road this area

Impact of deliveries to Office, Shop and Cafe on Visitor Experience reduced by "back door" access

Maintain Existing Service Area and Staff Parking

Existing Multipurpose Building/ Student Center

Existing Bath House

Existing Lower Campus Main Meditation Hall/ Temple

Locating Maintenance here reduces impact to all - visitors arriving to the Lower Campus, Staff/Volunteer Housing, the Upper Campus, views, activities at the Student Center, and provides easy access to the Upper Campus and Lower Campus

Dumpsters  
Maintenance  
Service Yard

Retain Existing Staff/Volunteer Housing Cluster - could be geared more towards housing maintenance/"service" staff/ volunteers due to adjacency to Maintenance area

Existing Labyrinth

Existing Memorial Garden

Service

Staff Parking

Office

Garden

Garden

Drop Off

55 Spaces concentrated in close proximity to the Welcome Center and Student Center

43 Spaces for times of high use

Landscape enhancements to screen staff community campus from road and Visitor Welcome Campus

Staff Only Entry

Signage could be provide to let visitors know of the Scenic Overlook

Scenic Overlook - rather than a pullout, visitors will use the parking and drives for the Welcome Center

Landscape Enhancements - Phase 1 of landscape enhancements to be plantings to enhance views, provide wayfinding cues, and screen parking and non-public buildings

Visitors leave their car behind and circulate to the Welcome Center on a nature path separated and screened from the parking lot with landscape enhancements

Parking entry for visitors arriving in vehicles is near the Welcome Center to reduce confusion about where to go

Information Kiosk

Welcome Center, Gift Shop, Cafe & Restrooms

View/Coffee/Dining deck cantilevered over natural drainage

Memorial Wall, Tsa Tsa Wall, to screen Visitor Experience and Garden from Staff Parking and traffic on the road. Wall reduces conflicts between activities at the Welcome Center and Student Center

Garden Experience as hub for circulation paths

Start of Medicine Buddha Stupa Pilgrimage to a Temple on the Mount

Existing Fire Puja Sites

Alternate Trail to Lower Campus

Existing Nature Trail

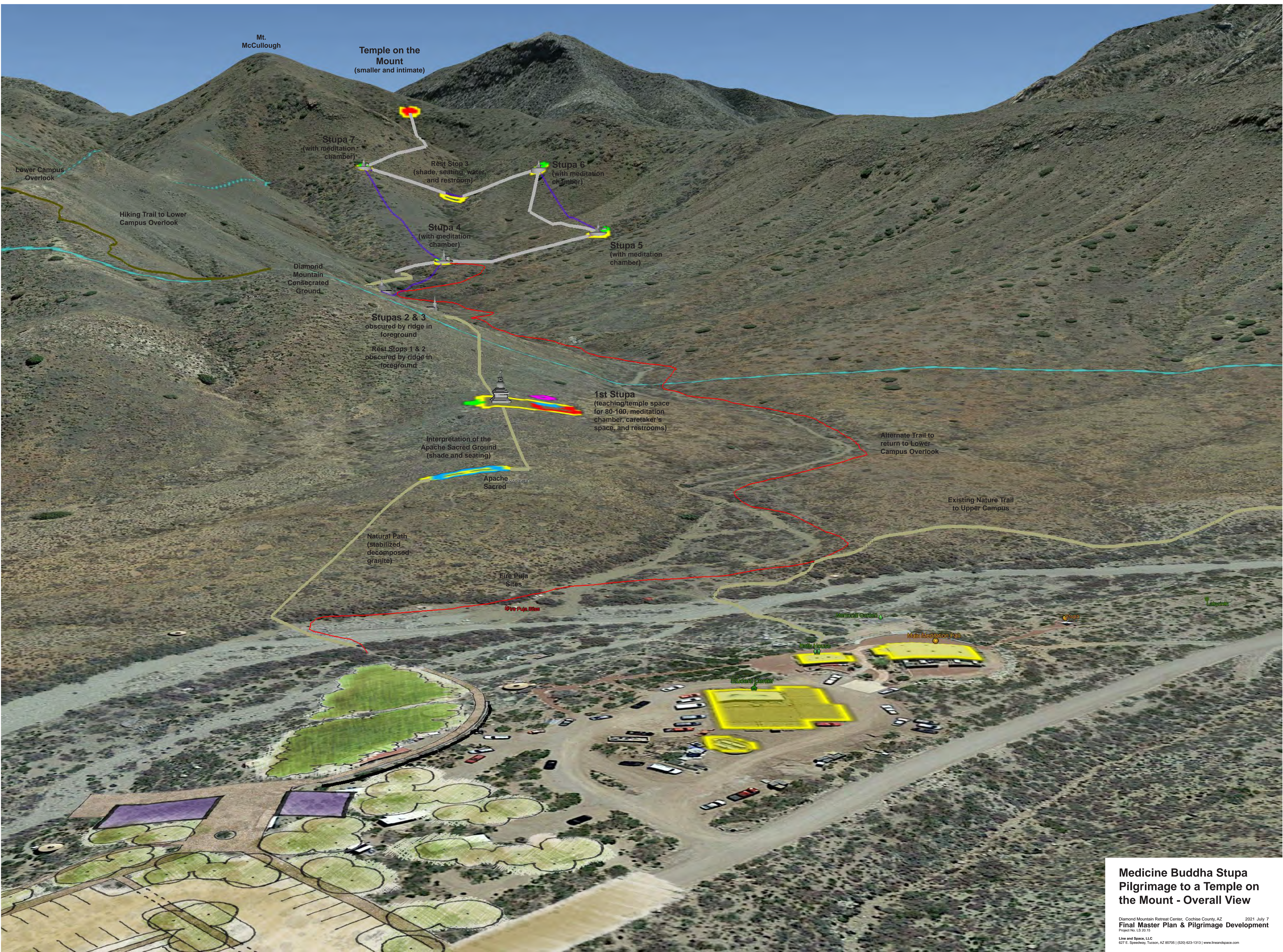
Wash to be used as road for construction equipment

Alternate return trail to Lower Campus parallels wash

# Lower Campus Master Plan

Diamond Mountain Retreat Center, Cochise County, AZ 2021 July 7  
Final Master Plan & Pilgrimage Development  
Project No. LS 20.15  
Line and Space, LLC  
627 E. Speedway, Tucson, AZ 85705 | (520) 623-1313 | www.lineandspace.com

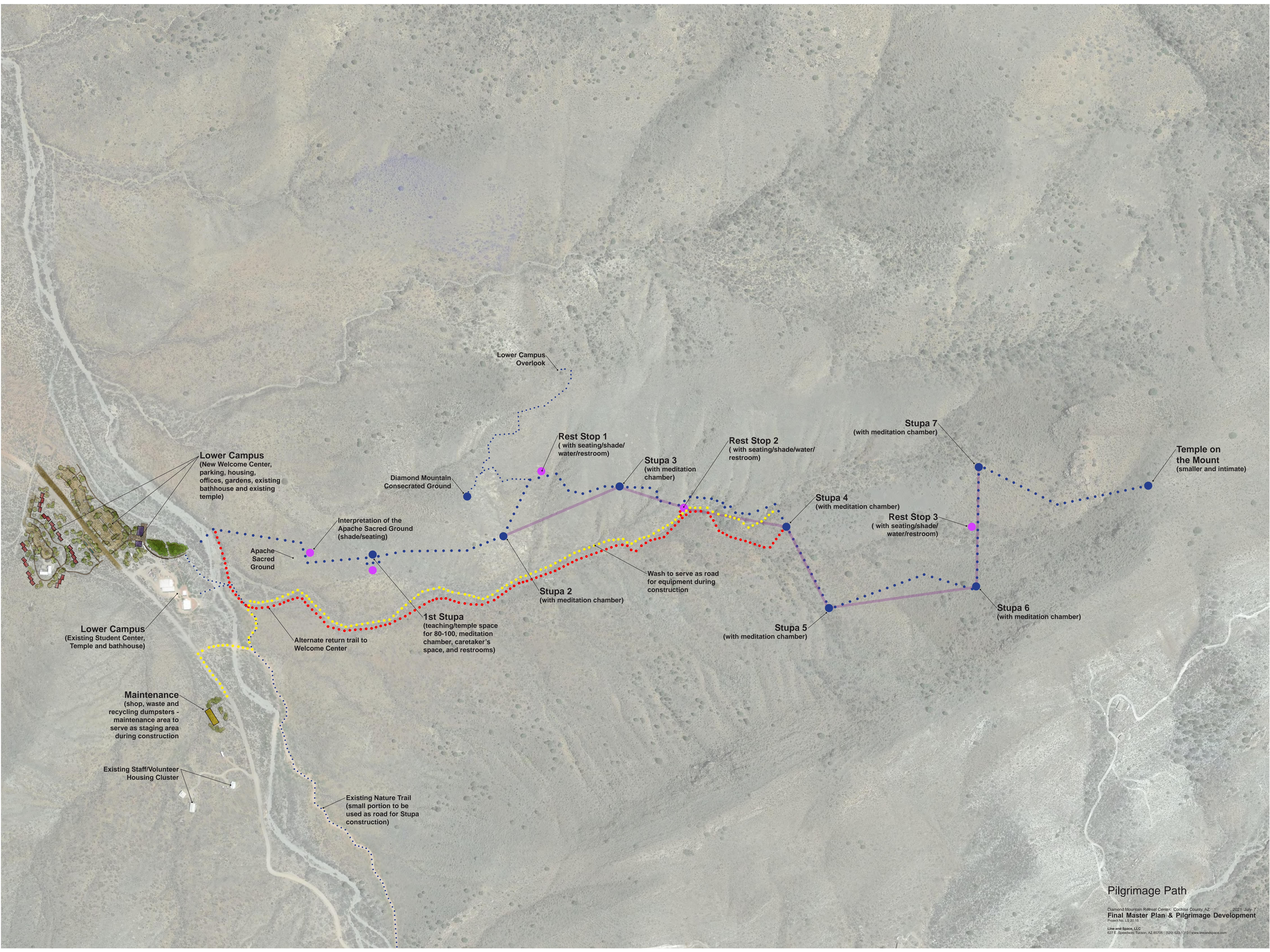




**Medicine Buddha Stupa  
Pilgrimage to a Temple on  
the Mount - Overall View**

Diamond Mountain Retreat Center, Cochise County, AZ 2021 July 7  
Final Master Plan & Pilgrimage Development  
Project No. LS 20.15  
Line and Space, LLC  
627 E. Speedway, Tucson, AZ 85705 | (520) 623-1313 | www.lineandspace.com





**Lower Campus**  
(New Welcome Center,  
parking, housing,  
offices, gardens, existing  
bathhouse and existing  
temple)

**Lower Campus**  
(Existing Student Center,  
Temple and bathhouse)

**Maintenance**  
(shop, waste and  
recycling dumpsters -  
maintenance area to  
serve as staging area  
during construction)

**Existing Staff/Volunteer  
Housing Cluster**

**Existing Nature Trail**  
(small portion to be  
used as road for Stupa  
construction)

**Interpretation of the  
Apache Sacred Ground**  
(shade/seating)

**Apache  
Sacred  
Ground**

**Alternate return trail to  
Welcome Center**

**1st Stupa**  
(teaching/temple space  
for 80-100, meditation  
chamber, caretaker's  
space, and restrooms)

**Diamond Mountain  
Consecrated Ground**

**Lower Campus  
Overlook**

**Rest Stop 1**  
( with seating/shade/  
water/restroom)

**Stupa 2**  
(with meditation chamber)

**Stupa 3**  
(with meditation  
chamber)

**Wash to serve as road  
for equipment during  
construction**

**Rest Stop 2**  
( with seating/shade/water/  
restroom)

**Stupa 5**  
(with meditation chamber)

**Stupa 4**  
(with meditation chamber)

**Rest Stop 3**  
( with seating/shade/  
water/restroom)

**Stupa 6**  
(with meditation chamber)

**Stupa 7**  
(with meditation chamber)

**Temple on  
the Mount**  
(smaller and intimate)

## Pilgrimage Path